

The SAS Enterprise Guide interface to PROC TABULATE

Tim Muir

Boehringer Ingelheim
Pharmaceuticals, Inc.

Project Explorer



SAS Folders

Unable to work with the requested item.

SAS Folders items are only available if Enterprise Guide is using a SAS Metadata Server as its repository.







Ready

Project Designer

Welcome to SAS Enterprise Guide

Select one of these options to get started:

Open a project


-  hasug200702
-  test4
-  test3
-  test2
-  macro_var_test
-  More projects ...

New

-  New Project
-  New SAS Program
-  New Data

Assistance

-  Tutorial: Getting Started with SAS Enterprise Guide

 Don't show this window again [Unknown] connected to localhost

File Edit View Code Data Describe Graph Analyze Add-In OLAP Tools Window Help

Project Designer Maximize Workspace Task Status

product1 (Process Flow)

Project Explorer

Project
Process Flow
product1

Project Designer

Process Flow



product1

Task List

Tasks by Category Tasks by Name

- Transpose
- Split Columns
- Stack Columns
- Random Sample
- Rank
- Standardize Data
- Data Set Attributes
- Compare Data
- Delete Data Sets and Formats

Describe

- List Data
- Summary Statistics [use wizard]
- Distribution Analysis
- Characterize Data
- Summary Tables [use wizard]
- One-Way Frequencies
- Table Analysis

Graph

- Bar Chart [use wizard]
- Pie Chart [use wizard]

SAS Folders

Unable to work with the requested item.

SAS Folders items are only available if Enterprise Guide is using a SAS Metadata Server as its repository.

If you would like to use SAS Folders

- Task Roles
- Summary Tables
- Results
- Titles

Task Roles

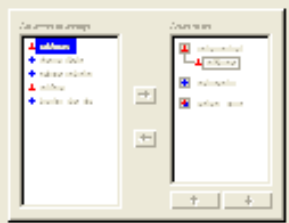
Variables to assign:

Name
ProductID
ProductName
SupplierID
CategoryID
QuantityPerUnit
UnitPrice
UnitsInStock
UnitsOnOrder
ReorderLevel
Discontinued
CategoryName



Task roles:

- Analysis variables
 - <variable required>
- Classification variables
 - <variable required>
- Pages
- Relative weight (Limit: 1)
- Frequency count (Limit: 1)



Preview code

Run

Save

Cancel

Help

Type in the keyword to find:

~ (tilde) format modifier
 ~ (tilde) format modifier, definition
 # (pound sign), variables as plot point label
 #BYLINE option, text string specifications
 #BYVAL option, text string specifications
 #BYVAR option, text string specifications
 \$ASCIIw. format
 \$ASCIIw. informat
 \$BINARYw. format
 \$BINARYw. informat
 \$CBw. informat
 \$CHARw. format
 \$CHARw. informat
 compared to \$ASCII informat
 compared to \$CHARZBw. informat
 compared to \$EBCDICw. informat
 compared to \$w. informat
 \$CHARZBw. informat
 \$EBCDICw. format
 \$EBCDICw. informat
 compared to S37OFFw.d informat
 \$GEOREF format
 \$HEXw. format
 compared to HEXw. format
 \$HEXw. informat
 compared to \$BINARYw. informat
 \$MSGCASEw. format
 \$OCTALw. format
 \$OCTALw. informat
 \$QUOTEw. format
 \$QUOTEw. informat
 \$REVERJw. format
 \$REVERSw. format

Summary Tables

Assigning variables to analysis roles

➔ In the selection pane, click **Task Roles** to access these options. See [Assigning Task Roles](#) for help on assigning variables to roles.

The following analysis roles are available for this task:

Analysis variables

The variables that you assign to this role are the numeric variables on which you want to have statistics calculated. You must assign at least one variable to either this role or the **Classification variables** role.

Classification variables

The variables that you assign to this role are character or discrete numeric variables that are used to divide the input data into categories. The statistics will be calculated on all selected analysis variables for each unique combination of classification variables. You must assign at least one variable to either this role or the **Analysis variables** role.

This role enables you to set some additional options:

- **Sort by** can be set to
 - **Data set order** to order the values by their appearance in the data set
 - **Formatted values** to order the values by their ascending formatted values
 - **Descending frequencies** to order the values so that the levels with the highest frequency counts come first
 - **Unformatted values** to order the values by their unformatted values.
- **Order** can be set to order the values as ascending or descending.
- **Missing values** can be set to include or exclude missing values from analysis.
- **Multilabel formats** can be enabled so that the primary and secondary format labels for a given range or overlapping ranges are used to create




Contents Index Search Favorites

Type in the keyword to find:

~ (tilde) format modifier
 ~ (tilde) format modifier, definition
 # (pound sign), variables as plot point label
 #BYLINE option, text string specifications
 #BYVAL option, text string specifications
 #BYVAR option, text string specifications
 \$ASCIIw. format
 \$ASCIIw. informat
 \$BINARYw. format
 \$BINARYw. informat
 \$CBw. informat
 \$CHARw. format
 \$CHARw. informat
 compared to \$ASCII informat
 compared to \$CHARZBw. informat
 compared to \$EBCDICw. informat
 compared to \$w. informat
 \$CHARZBw. informat
 \$EBCDICw. format
 \$EBCDICw. informat
 compared to \$37OFFw.d informat
 \$GEOREF format
 \$HEXw. format
 compared to HEXw. format
 \$HEXw. informat
 compared to \$BINARYw. informat
 \$MSGCASEw. format
 \$OCTALw. format
 \$OCTALw. informat
 \$QUOTEw. format
 \$QUOTEw. informat
 \$REVERJw. format
 \$REVERSw. format

Display

This role enables you to set some additional options.

- **Sort by** can be set to
 - **Data set order** to order the values by their appearance in the data set
 - **Formatted values** to order the values by their ascending formatted values
 - **Descending frequencies** to order the values so that the levels with the highest frequency counts come first
 - **Unformatted values** to order the values by their unformatted values.
- **Order** can be set to order the values as ascending or descending.
- **Missing values** can be set to include or exclude missing values from analysis.
- **Multilabel formats** can be enabled so that the primary and secondary format labels for a given range or overlapping ranges are used to create subgroup combinations when a multilabel format is assigned to this variable.
- **Heading format** can be set to associate a standard SAS format or **user-written format** with the variable. Click  to **select the format**.

Pages

When you assign one or more variables to this role, a separate summary table is generated for each distinct value of the **Pages** variables.

You cannot group analyses by a variable that you have already selected as an analysis variable. Any variable that you assign to the **Pages** role is also added to the **Classification variables** role.

Relative weight

When you assign a variable to this role, the value of the numeric variable is used to weight the values of the analysis variables. You can assign a maximum of one variable to this role.

Frequency count

When you assign a variable to this role, each observation in the table is assumed to represent n observations, where n is the value of the frequency count for that row. Statistics are calculated accordingly. You can assign a maximum of one variable to this role.



Task Roles

Summary Tables

Results

Titles

Task Roles

Variables to assign:

Name
ProductID
ProductName
SupplierID
CategoryID
QuantityPerUnit
UnitPrice
UnitsInStock
UnitsOnOrder
ReorderLevel
Discontinued
CategoryName

Task roles:

Analysis variables
UnitsOnOrder
UnitsInStock
Classification variables
CategoryName
ProductName
UnitPrice
QuantityPerUnit
Pages
CategoryName
Relative weight (Limit: 1)
Frequency count (Limit: 1)

**Class level "CategoryNa...**

Sort by	Unformatte...
Order	Ascending
Missing val...	Include
Restrict lev...	Disabled
Multilabel f...	Disabled
Heading for...	



Preview code

Run

Save

Cancel

Help



- Task Roles
- Summary Tables
- Results
- Titles

Task Roles

Variables to assign:

Name
ProductID
ProductName
SupplierID
CategoryID
QuantityPerUnit
UnitPrice
UnitsInStock
UnitsOnOrder
ReorderLevel
Discontinued
CategoryName

Task roles:

Analysis variables
UnitsOnOrder
UnitsInStock
Classification variables
CategoryName
ProductName
UnitPrice
QuantityPerUnit
Pages
CategoryName
Relative weight (Limit: 1)
Frequency count (Limit: 1)



Runs the task with the options that you have selected.

Preview code

Run

Save

Cancel

Help



- Task Roles
- Summary Tables
- Results
- Titles

Summary Tables

Available variables:

- ALL (universal...)
- CategoryName
- ProductName
- QuantityPerUnit
- UnitPrice
- UnitsInStock
- UnitsOnOrder

Available statistics:

Name	Descrip...
ColP...	Column ...
ColP...	Column ...
CSS	Correct...
CV	Coeffici...
Max	Maximu...
Mean	Mean (a...
Median	Median ...
Min	Minimu...
N	Number...
NMiss	Number...
P1	1st perc...
P10	10th pe...

Preview:

Box Area	N
ALL	

Page by: CategoryName

The selection pane enables you to choose different sets of options for the task.

Preview code

Run

Save

Cancel

Help


```
----- */
PROC TABULATE
  DATA=ECLIB000.PRODUCT1

  ;
  VAR UnitsOnOrder UnitsInStock;
  CLASS CategoryName / ORDER=UNFORMATTED MISSING;
  CLASS ProductName / ORDER=UNFORMATTED MISSING;
  CLASS UnitPrice / ORDER=UNFORMATTED MISSING;
  CLASS QuantityPerUnit / ORDER=UNFORMATTED MISSING;
  TABLE /* Page Dimension */
  CategoryName,
  /* Row Dimension */
  ProductName*
    UnitPrice*
      QuantityPerUnit,
  /* Column Dimension */
  UnitsInStock={LABEL='Number of units in stock'}*
    Sum={LABEL='' }
  UnitsOnOrder={LABEL='Number of units on order'}*
    Sum={LABEL='' }
  ;

RUN;

/* -----
   End of task code.
   ----- */

RUN; QUIT;

PROC SQL;
  %_SASTASK_DROPDS(WORK.SORTTempTableSorted);
QUIT;
```

product1 (Process Flow)

Project Explorer

object
Process Flow
product1
Summary Tables
Last Submitted Code
Log
HTML - Summary Tables
SAS Report - Summary Tables

Project Designer

SAS Report - Summary Tables

Summary Tables

CategoryName Beverages

Product Name	Unit Price	Quantity Per Unit	Number of units in stock	Number of units on order
Chai	\$18.00	10 boxes x 20 bags	39.00	0.00
Chang	\$19.00	24 - 12 oz bottles	17.00	40.00
Chartreuse verte	\$18.00	750 cc per bottle	69.00	0.00
Côte de Blaye	\$263.50	12 - 75 cl bottles	17.00	0.00
Guaraná Fantástica	\$4.50	12 - 355 ml cans	20.00	0.00
Ipho Coffee	\$46.00	16 - 500 g tins	17.00	10.00
Lakkalikööri	\$18.00	500 ml	57.00	0.00
Laughing Lumberjack Lager	\$14.00	24 - 12 oz bottles	52.00	0.00
Outback Lager	\$15.00	24 - 355 ml bottles	15.00	10.00
Rhönbräu Klosterbier	\$7.75	24 - 0.5 l bottles	125.00	0.00
Sasquatch Ale	\$14.00	24 - 12 oz bottles	111.00	0.00

SAS Folders

Unable to work with the requested item.

SAS Folders items are only available if Enterprise Guide is using a SAS Metadata Server as its repository.

If you would like to use SAS Folders items

Questions?

Thank you