

# Graph – N – Go a Tutorial

Karol. H. Katz, M.S.

HASUG Feb 15, 2007

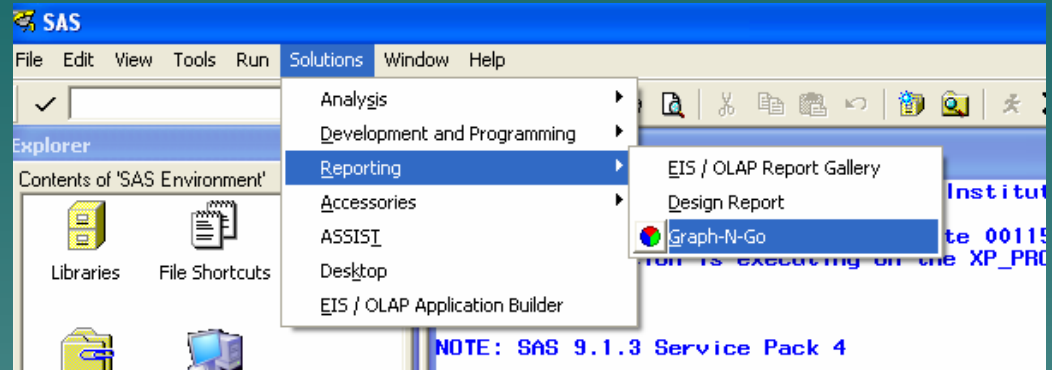
# Accessing GNG Workspace

From SAS Toolbar:

> Solutions

> Reporting

> Graph-N-Go

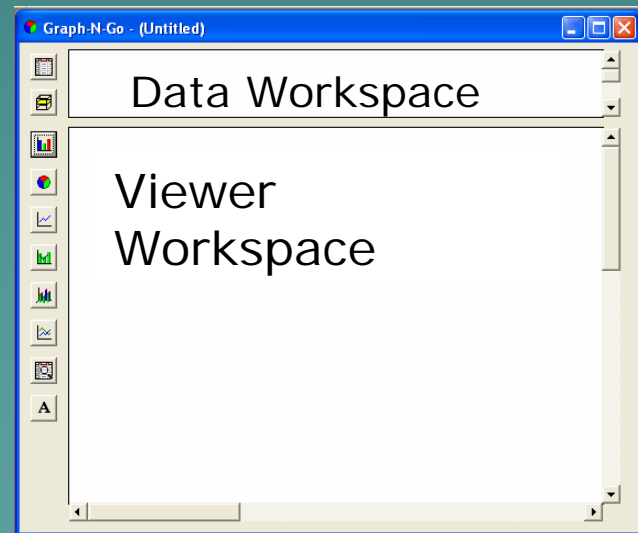


From the Command Line:

type

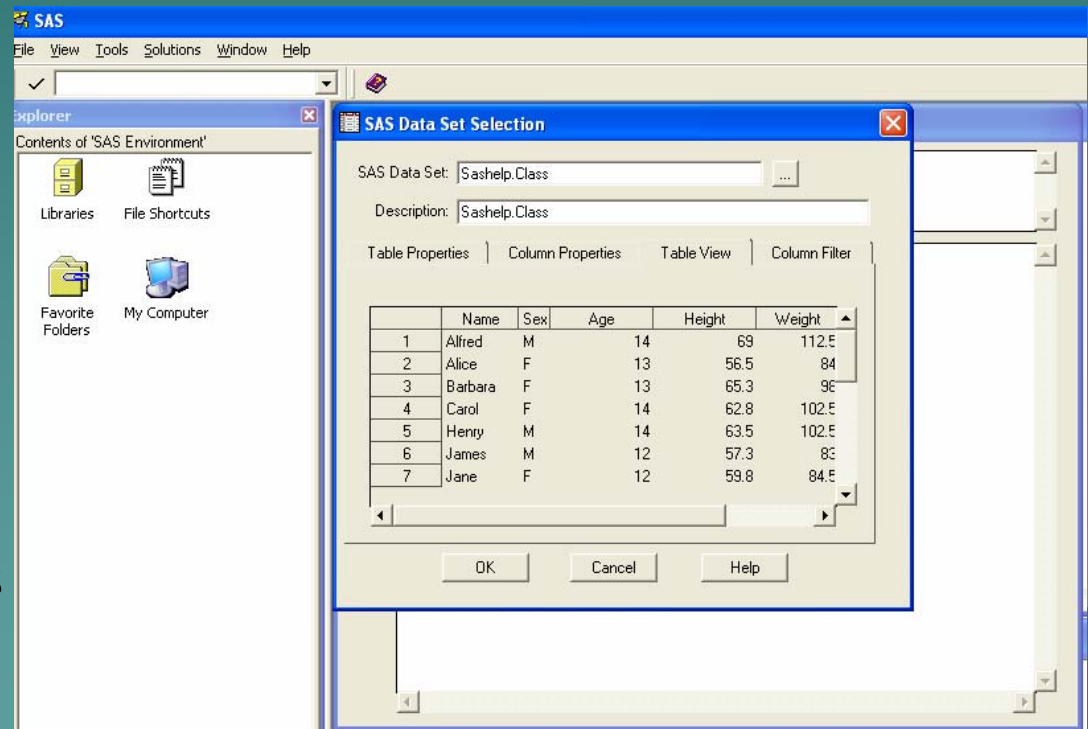
GNG

The GNG window will appear.  
Click the top-left button in the  
GNG window. The SAS data set  
selection window will appear.



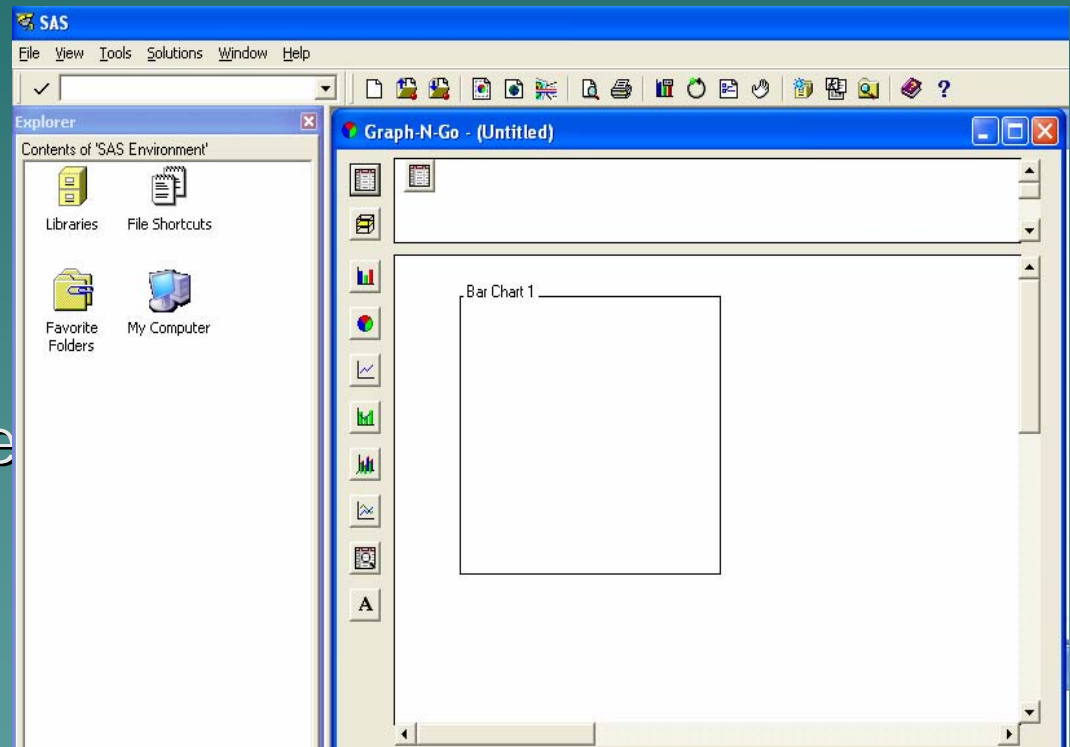
# Create a Data Object

- ◆ Click the SAShelp library.
- ◆ Select Class as the dataset. Click OK.
- ◆ Select the Table View tab to review the data.
- ◆ A viewer displays columns of your data object in a particular way.
- ◆ Click OK. This creates the data object.



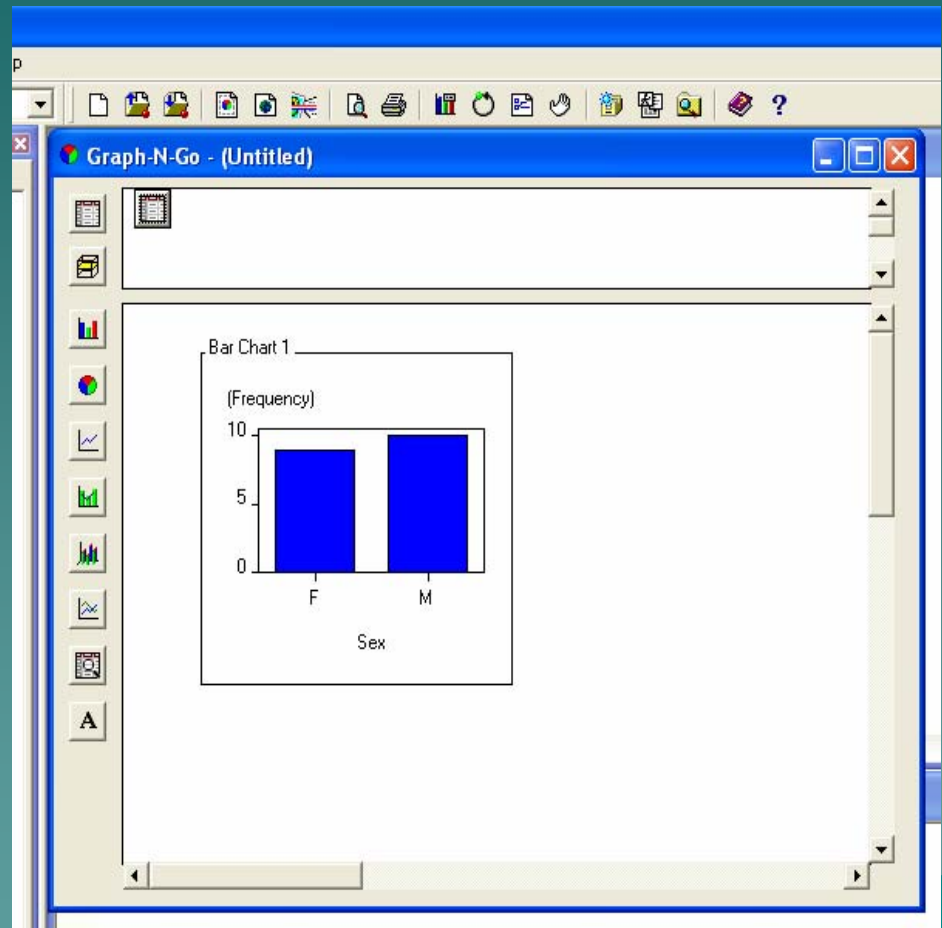
# Create a viewer object

- ◆ Click the Bar Chart button (3<sup>rd</sup> from top).
- ◆ The mouse pointer will change to a "hand".
- ◆ Position the "hand" in the middle of the larger white area and click again.
- ◆ You see an empty box titled Bar Chart 1



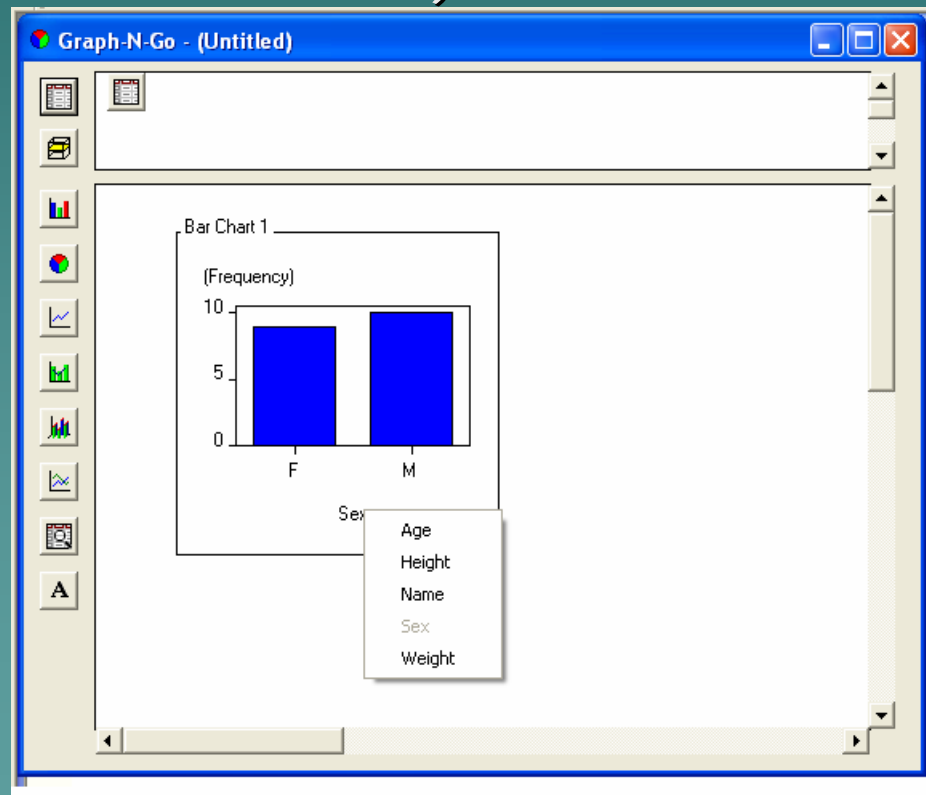
# Link Data and Viewer Object

- ◆ A data object must be linked to a viewer for the viewer to display the data.
- ◆ Drag the data icon for SasHELP.CLASS and drop it on the empty Bar Chart viewer.
- ◆ The Bar Chart viewer now displays a default graph of the data.

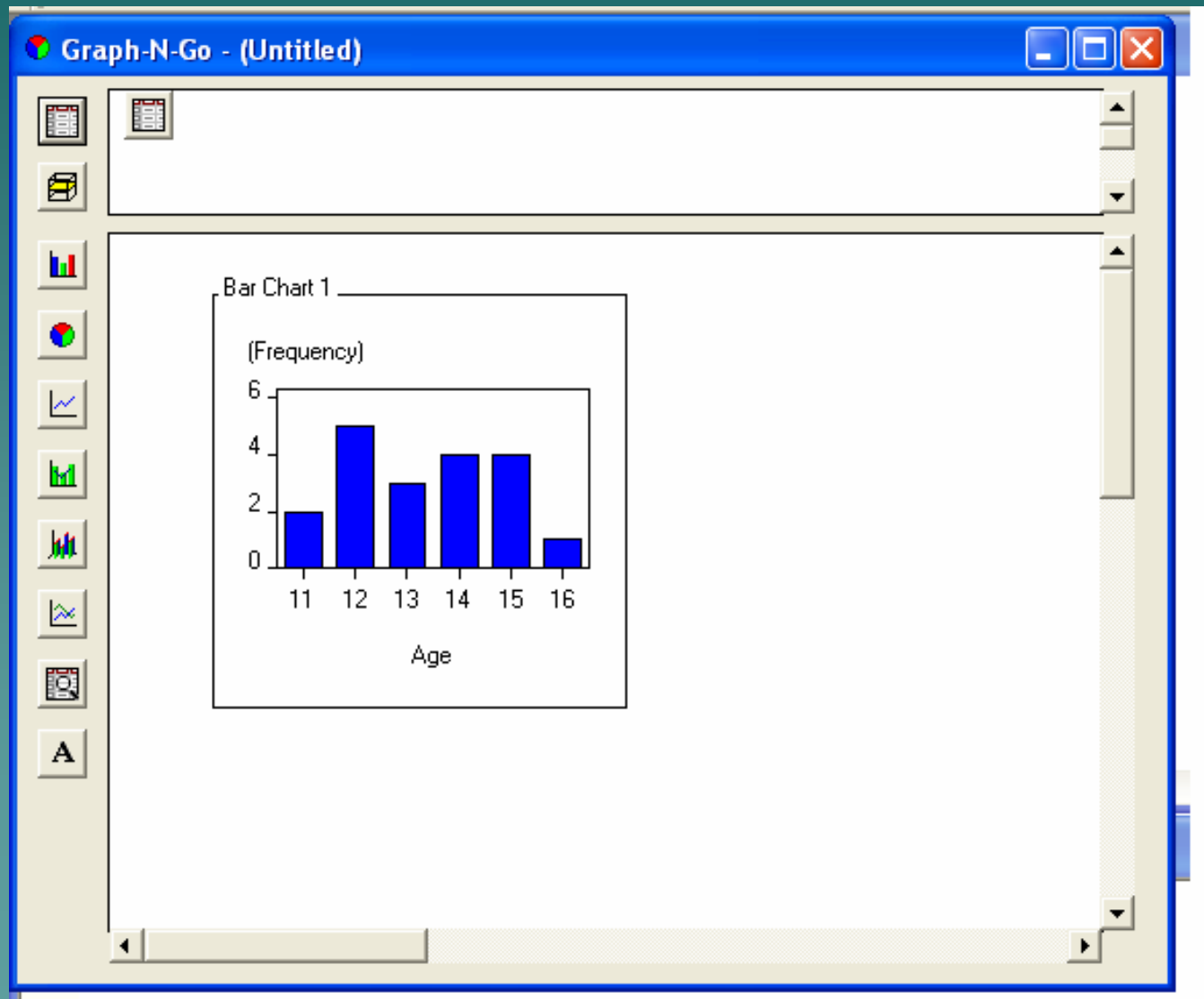


# Change Viewer Properties

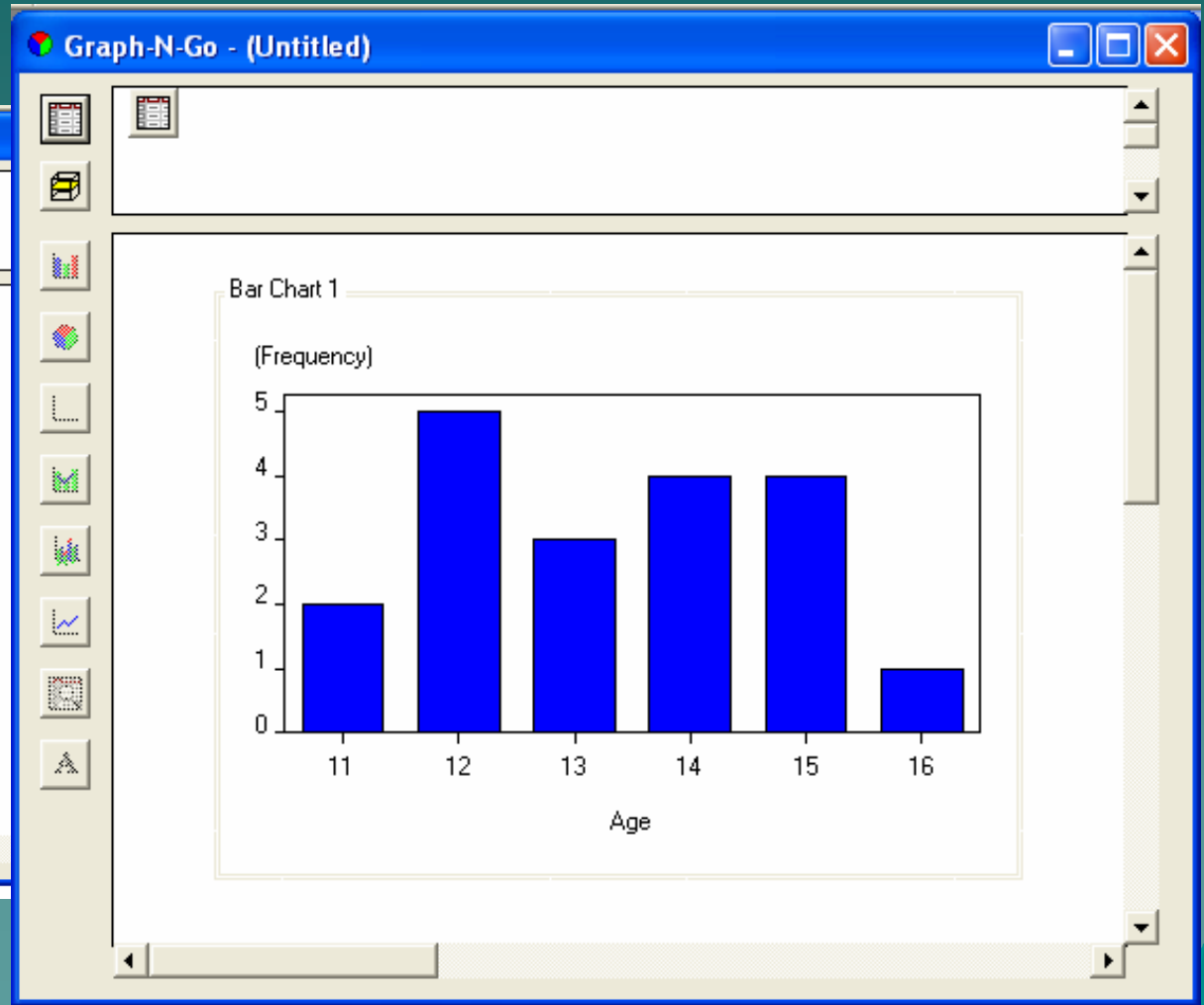
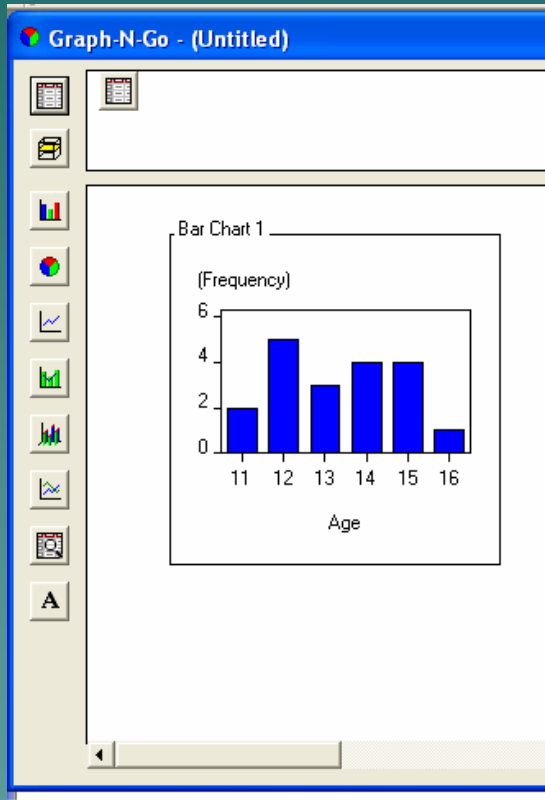
- ◆ Use popup menu (right mouse click) to Change the Category Column from Sex to Age. (Horizontal axis on this chart).



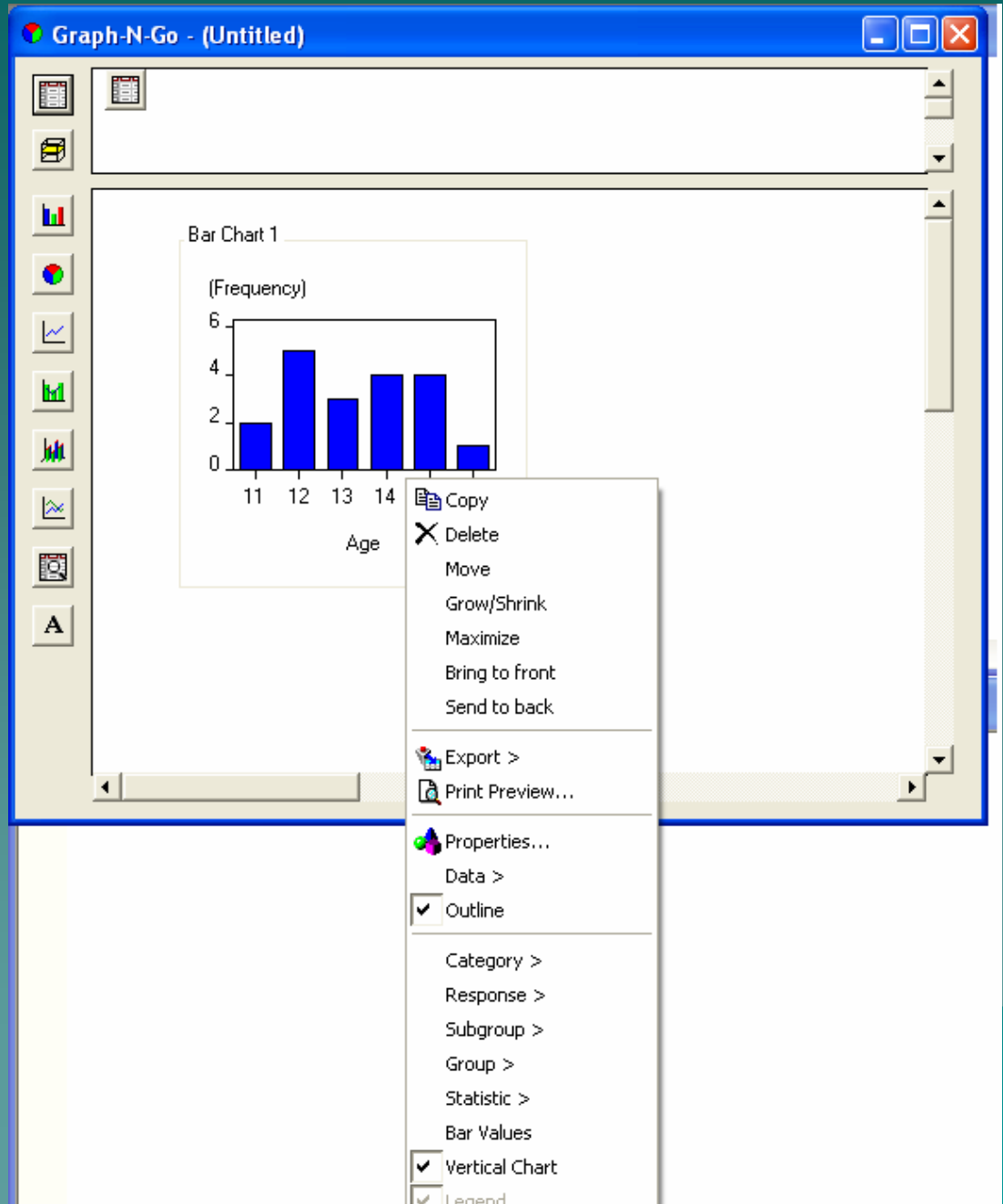
# One Click Changed the Category



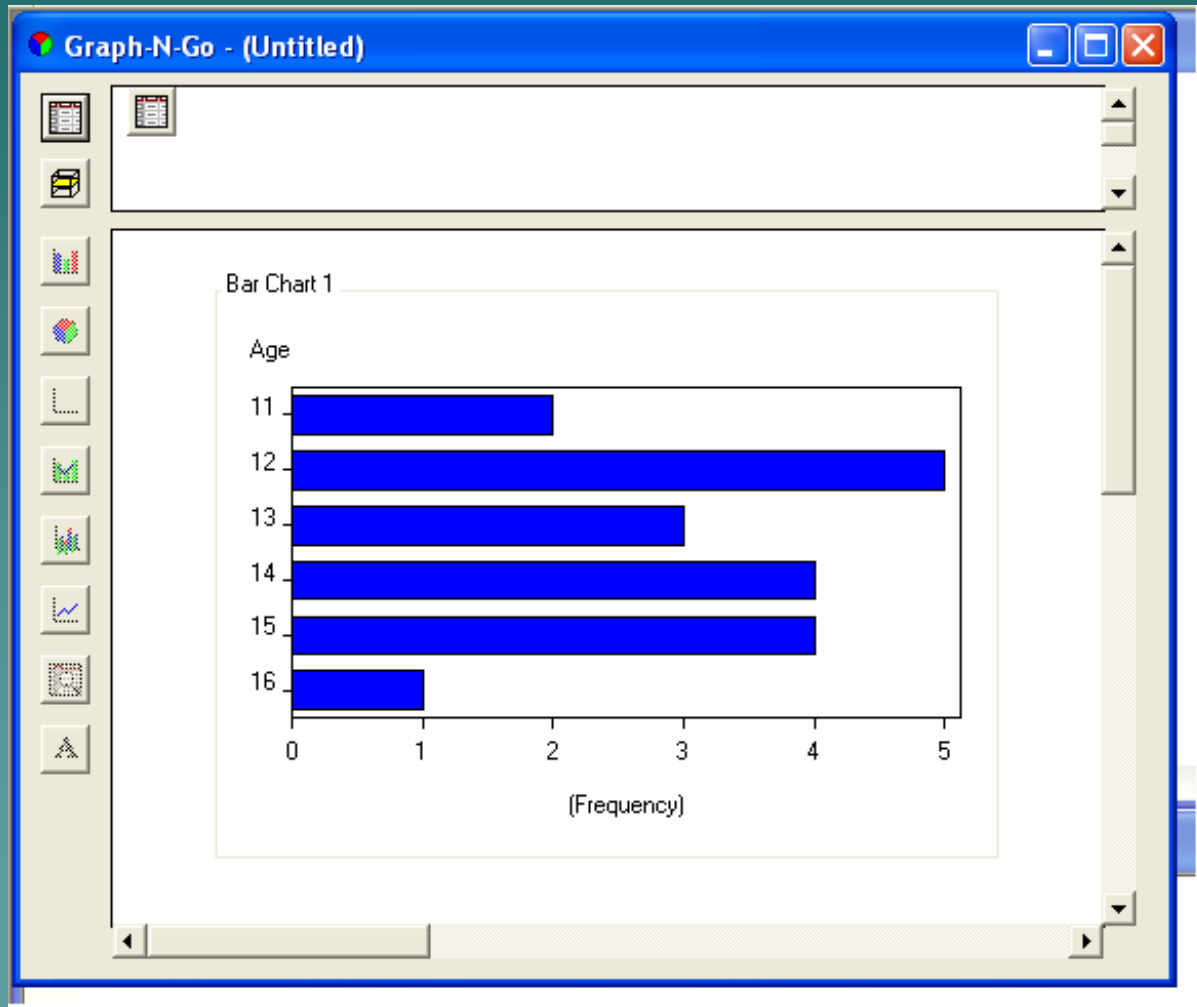
# Chart can also Grow/Shrink/Resize



- ◆ To make changes  
Right Click in  
Chart and  
select  
properties .
- ◆ For Example  
To change to  
a horizontal  
chart  
deselect the  
check mark  
next to  
Vertical Chart



# Changed to Horizontal Bar Chart



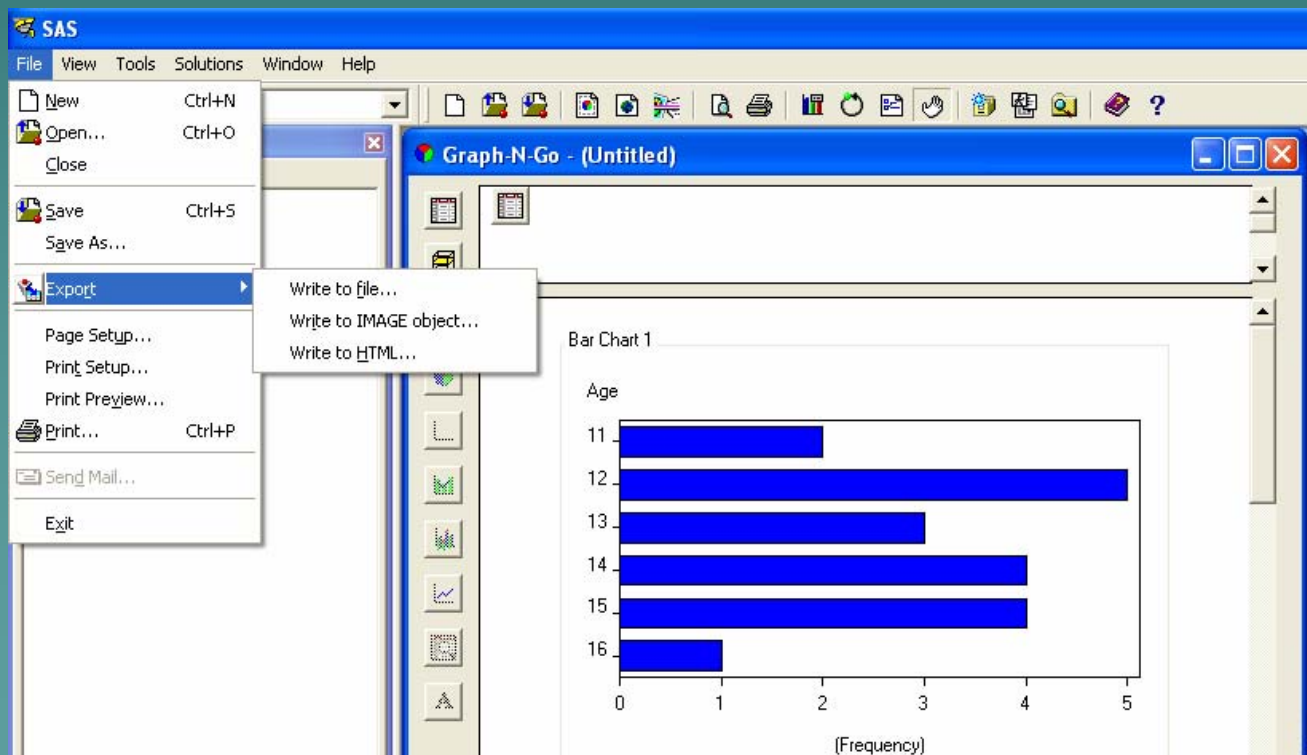
You now know the basics of how to create a graph with Graph-N-Go.

There are several things you may want to do with your graph:

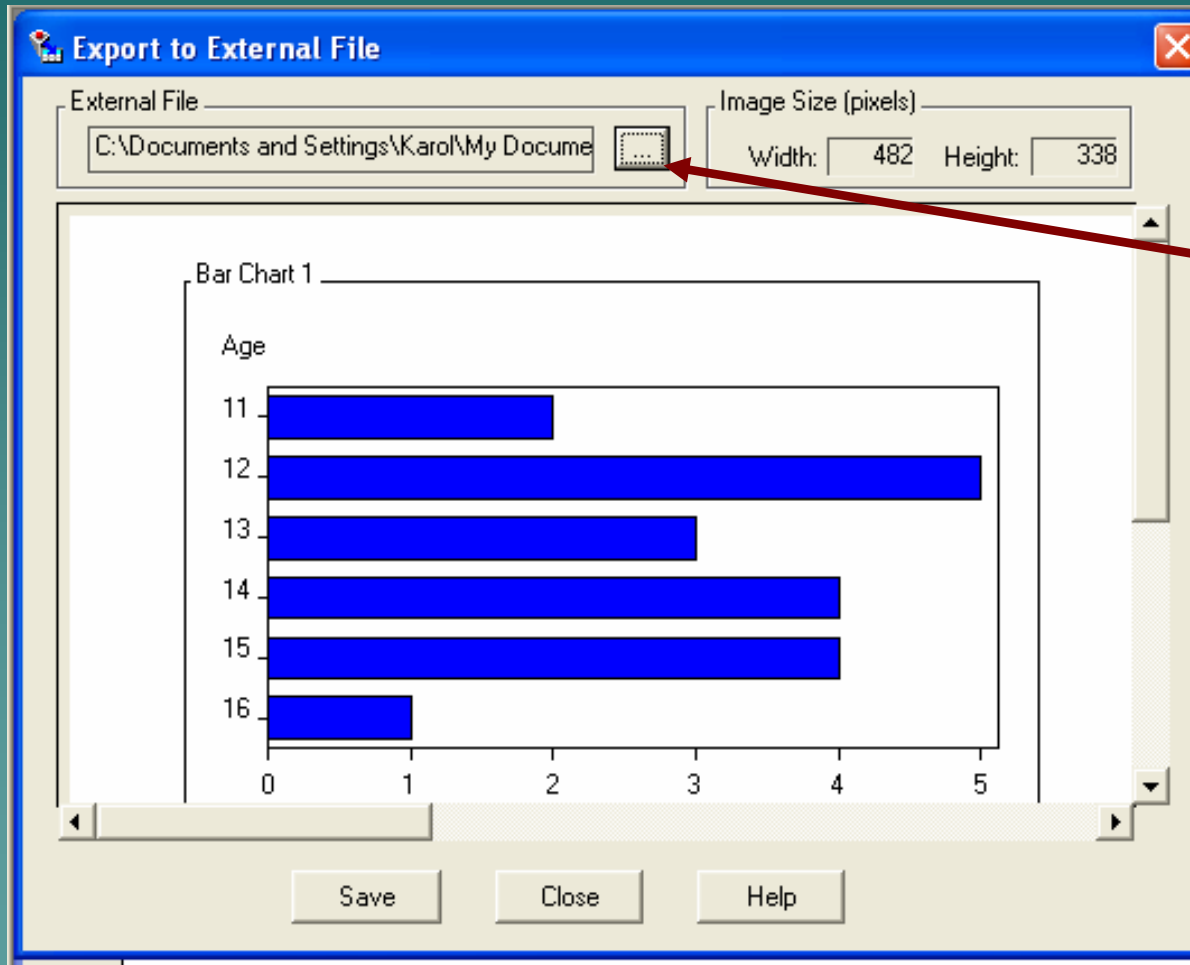
print it,

export it to an HTML file,

export it to some image format that can be included in a document (JPG ,GIF etc.).



# Saving Graph as a file



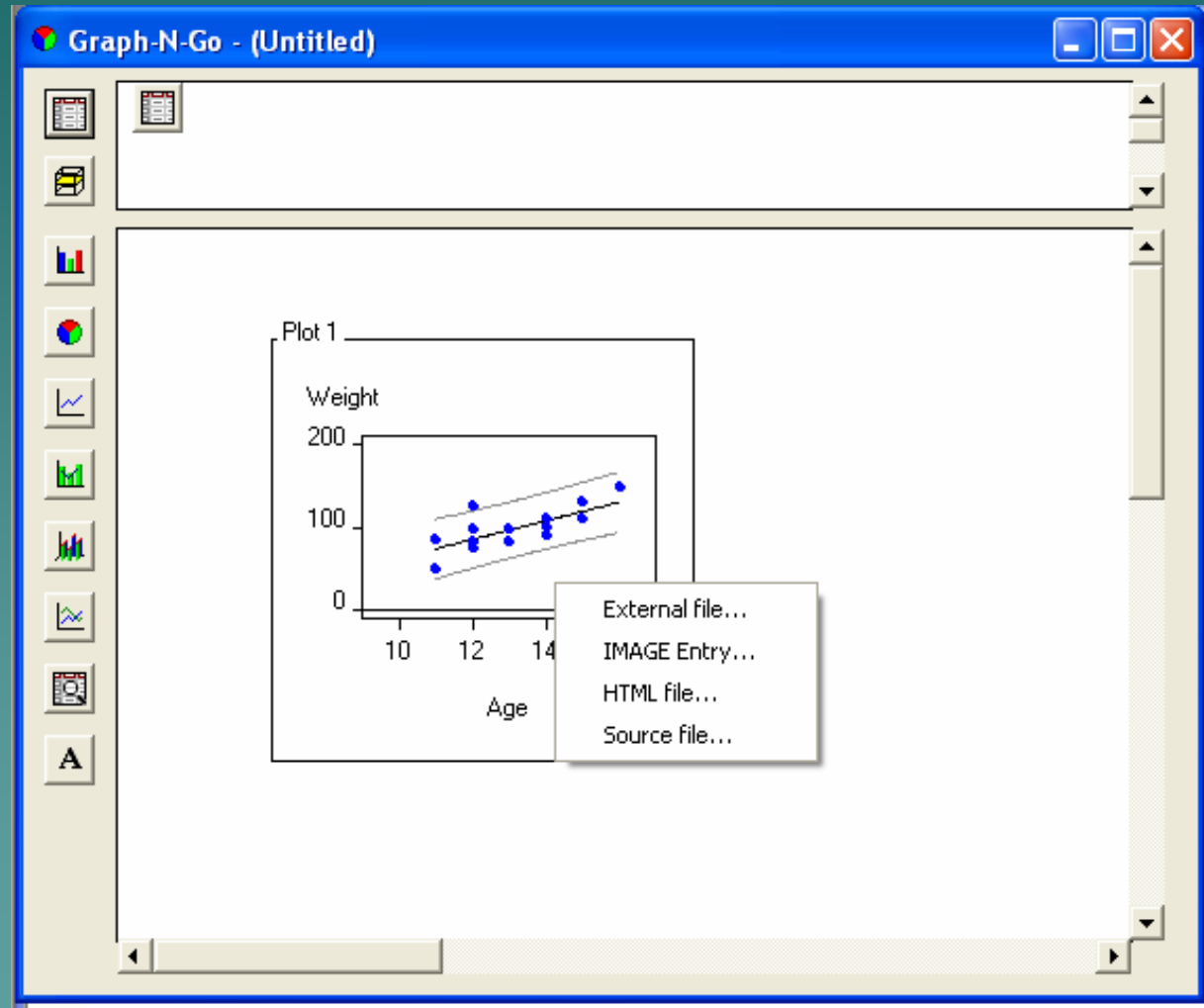
Click ... to  
Name File.

Then Click  
SAVE

Create a new Graph using the Class dataset–

PLOT Regression of Weight by Age

Right Click the graph to Save source file as SAS program

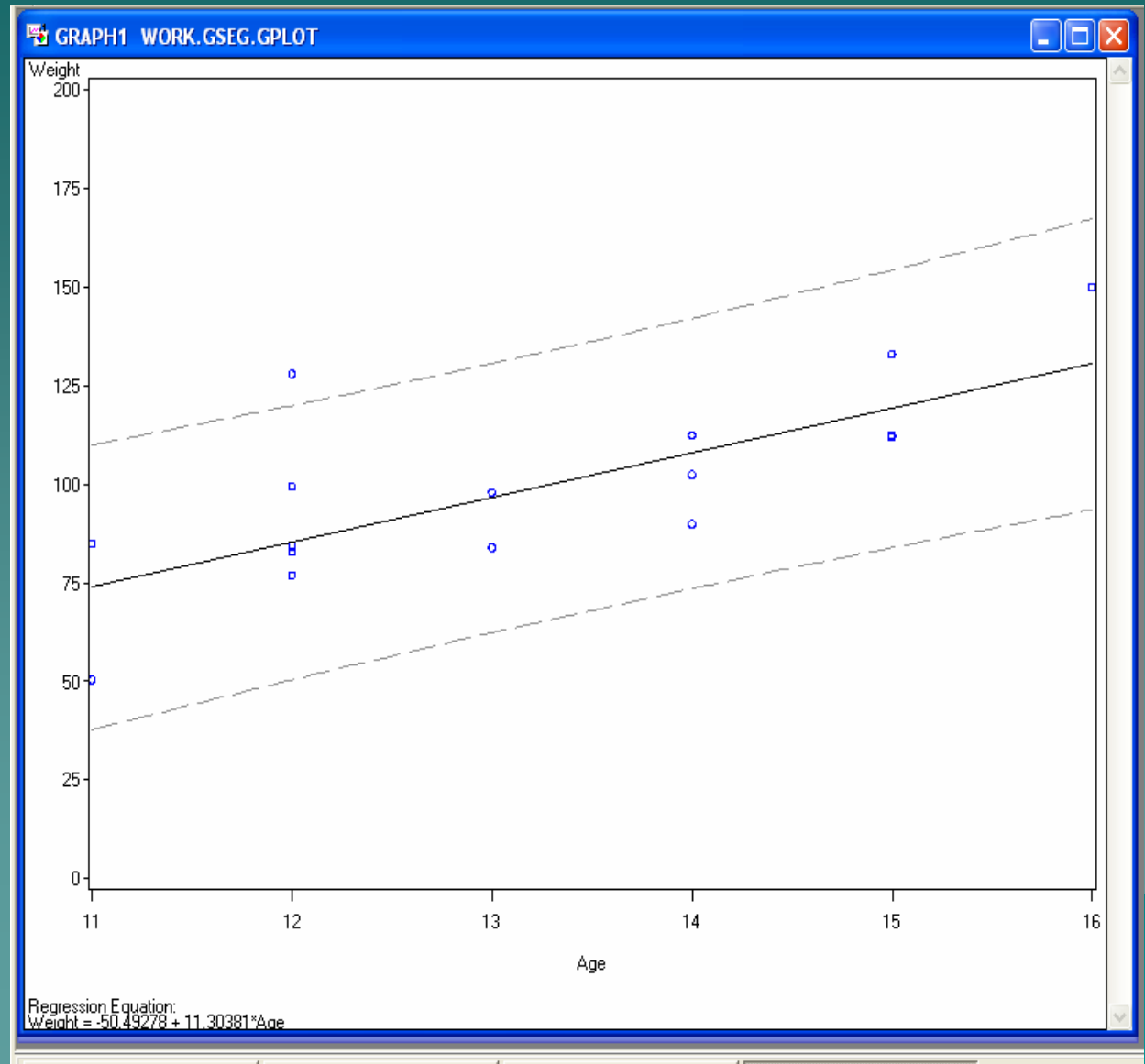
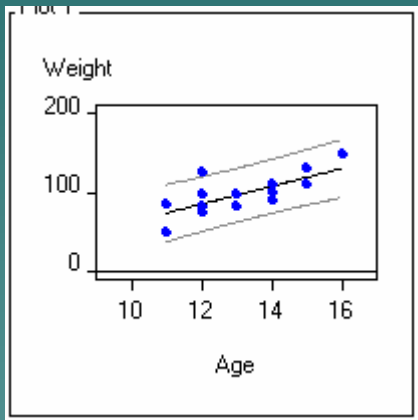




## SAS/Graph Program continued

```
proc gplot data=SASHELP.CLASS;  
  plot WEIGHT*AGE / REGEQN  
    haxis=axis1 vaxis=axis2  
    cframe=CXFFFFFF caxis=CX000000;  
run;  
quit;  
/* Reset all graphics options */  
goptions reset=all;  
/* End ODS output */  
* ods html close;  
* ods listing;
```

# SAS/Graph output from GNG source program



# GNG= an Easy to Use Tool

- ◆ You should experiment to discover many other features of Graph-N-Go.
- ◆ You can also read about them at any time in the Graph-N-Go help facility